

Accessories : Material Swing Lever

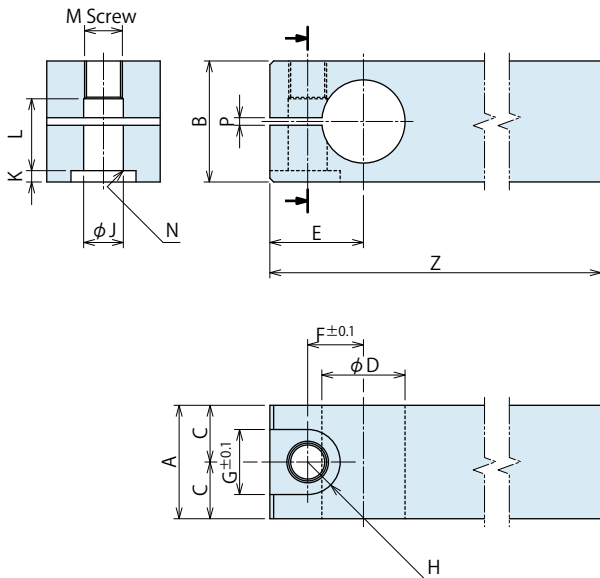
※ If you design and manufacture levers, the mounting dimensions should match the following table. If you manufacture the swing lever with different dimensions than the following table, it could lead to malfunctions, including poor clamp force not up to specification, deformation and scrapping.

Model No. Indication

**TLZ 080 0 - L2**

Size  
(Refer to the table.)

Design No.  
(Revision Number)



								(mm)
Model No.	TLZ0400-L2	TLZ0600-L2	TLZ0800-L2	TLZ1000-L2	TLZ1600-L2	TLZ2000-L2	TLZ2500-L2	TLZ4000-L2
Corresponding Model No.	TLA0401-2	TLA0601-2	TLA0801-2	TLA1001-2	TLA1601-2	TLA2001-2	TLA2501-2	TLA4001-2
A	19	22	25	30	34	40	46	55
B	22	25	26	32	36	45	53	70
C	9.5	11	12.5	15	17	20	23	27.5
D	14 <sup>0</sup> <sub>-0.016</sub>	16 <sup>0</sup> <sub>-0.016</sub>	18 <sup>0</sup> <sub>-0.016</sub>	22 <sup>0</sup> <sub>-0.020</sub>	25 <sup>0</sup> <sub>-0.020</sub>	30 <sup>0</sup> <sub>-0.020</sub>	35.5 <sup>0</sup> <sub>-0.025</sub>	45 <sup>0</sup> <sub>-0.025</sub>
E	15	18	19	23	26.5	31.5	36.5	46
F	9.25	11	12	14.75	17	20	23.5	29.75
G	11	14	14	17.5	20	23	26	32
H	5.5	7	7	8.75	10	11.5	13	16
J	6.5	8.5	8.5	10.5	12.5	14.5	16.5	21
K	2	3	3	4	4	5	7	9
L	13.5	15.5	16	18	22	26.5	31	42
M	M6×1	M8×1	M8×1	M10×1.25	M12×1.5	M14×1.5	M16×1.5	M20×2
N	C0.4	C0.6	C0.6	C0.6	C1	C1	C1	C1
P	2	2	2	2	2	2	2	2
Z	105	120	145	160	170	175	185	220

Notes :

1. Material : S50CH
2. If necessary, the front end should be additionally machined.
3. If lever phasing is required, refer to "Pin Hole for Lever Phasing Additional Machining Dimensions" for additional machining.
4. Lever tightening bolt is sold separately.

Accessories : Tightening Bolts for Quick Change Lever

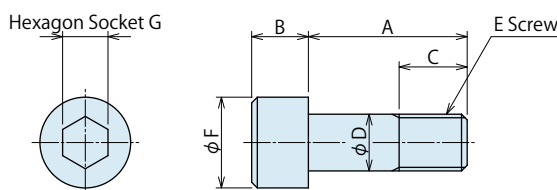
※ When designing the lever tightening bolt, follow the dimensions shown below. Strength Grade should be 12.9 or more.

Model No. Indication

**TLZ 080 0 - LB**

Size  
(Refer to the table.)

Design No.  
(Revision Number)



								(mm)
Model No.	TLZ0400-LB	TLZ0600-LB	TLZ0800-LB	TLZ1000-LB	TLZ1600-LB	TLZ2000-LB	TLZ2500-LB	TLZ4000-LB
Corresponding Model No.	TLA0401-2	TLA0601-2	TLA0801-2	TLA1001-2	TLA1601-2	TLA2001-2	TLA2501-2	TLA4001-2
A	20	22	23	28	32	40	46	61
B	6	8	8	10	12	14	16	20
C	7	9	10	11	13	16	18	23
D	6	8	8	10	12	14	16	20
E	M6×1	M8×1	M8×1	M10×1.25	M12×1.5	M14×1.5	M16×1.5	M20×2
F	10	13	13	16	18	21	24	30
G	5	6	6	8	10	12	14	17

● Accessories : Material Swing Lever

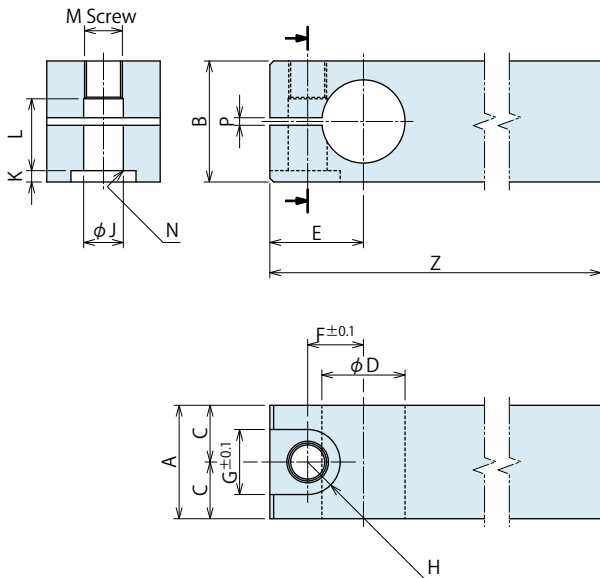
※ If you design and manufacture levers, the mounting dimensions should match the following table. If you manufacture the swing lever with different dimensions than the following table, it could lead to malfunctions, including poor clamp force not up to specification, deformation and scrapping.

Model No. Indication

**TLZ 080 0 - L2**

Size  
(Refer to the table.)

Design No.  
(Revision Number)



								(mm)
Model	TLZ0400-L2	TLZ0600-L2	TLZ0800-L2	TLZ1000-L2	TLZ1600-L2	TLZ2000-L2	TLZ2500-L2	TLZ4000-L2
Corresponding Model No.	TLB0401-2	TLB0601-2	TLB0801-2	TLB1001-2	TLB1601-2	TLB2001-2	TLB2501-2	TLB4001-2
A	19	22	25	30	34	40	46	55
B	22	25	26	32	36	45	53	70
C	9.5	11	12.5	15	17	20	23	27.5
D	14 <sup>0</sup> <sub>-0.016</sub>	16 <sup>0</sup> <sub>-0.016</sub>	18 <sup>0</sup> <sub>-0.016</sub>	22 <sup>0</sup> <sub>-0.020</sub>	25 <sup>0</sup> <sub>-0.020</sub>	30 <sup>0</sup> <sub>-0.020</sub>	35.5 <sup>0</sup> <sub>-0.025</sub>	45 <sup>0</sup> <sub>-0.025</sub>
E	15	18	19	23	26.5	31.5	36.5	46
F	9.25	11	12	14.75	17	20	23.5	29.75
G	11	14	14	17.5	20	23	26	32
H	5.5	7	7	8.75	10	11.5	13	16
J	6.5	8.5	8.5	10.5	12.5	14.5	16.5	21
K	2	3	3	4	4	5	7	9
L	13.5	15.5	16	18	22	26.5	31	42
M	M6×1	M8×1	M8×1	M10×1.25	M12×1.5	M14×1.5	M16×1.5	M20×2
N	C0.4	C0.6	C0.6	C0.6	C1	C1	C1	C1
P	2	2	2	2	2	2	2	2
Z	105	120	145	160	170	175	185	220

Notes :

1. Material : S50CH
2. If necessary, the front end should be additionally machined.
3. If lever phasing is required, refer to "Pin Hole for Lever Phasing Additional Machining Dimensions" for additional machining.
4. Lever tightening bolt is sold separately.

● Accessories : Tightening Bolts for Quick Change Lever

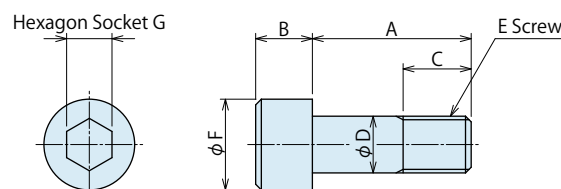
※ When designing the lever tightening bolt, follow the dimensions shown below. Strength Grade should be 12.9 or more.

Model No. Indication

**TLZ 080 0 - LB**

Size  
(Refer to the table.)

Design No.  
(Revision Number)



								(mm)
Model	TLZ0400-LB	TLZ0600-LB	TLZ0800-LB	TLZ1000-LB	TLZ1600-LB	TLZ2000-LB	TLZ2500-LB	TLZ4000-LB
Corresponding Model No.	TLB0401-2	TLB0601-2	TLB0801-2	TLB1001-2	TLB1601-2	TLB2001-2	TLB2501-2	TLB4001-2
A	20	22	23	28	32	40	46	61
B	6	8	8	10	12	14	16	20
C	7	9	10	11	13	16	18	23
D	6	8	8	10	12	14	16	20
E	M6×1	M8×1	M8×1	M10×1.25	M12×1.5	M14×1.5	M16×1.5	M20×2
F	10	13	13	16	18	21	24	30
G	5	6	6	8	10	12	14	17

Accessories : Material Swing Lever

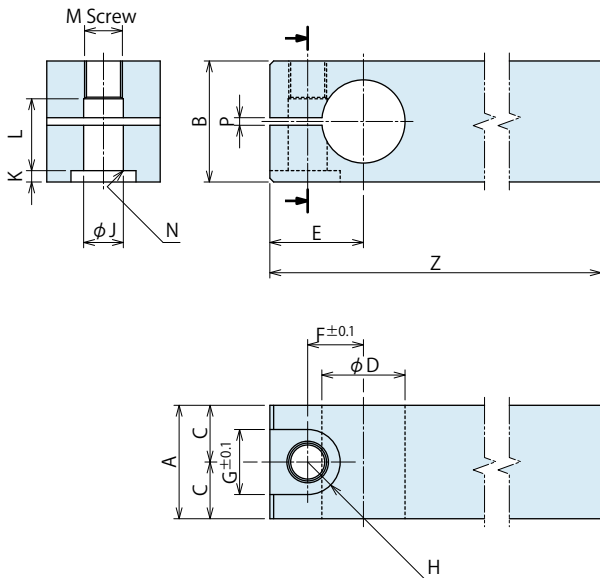
※ If you design and manufacture levers, the mounting dimensions should match the following table. If you manufacture the swing lever with different dimensions than the following table, it could lead to malfunctions, including poor clamp force not up to specification, deformation and scrapping.

Model No. Indication

**TLZ 080 0 - L2**

Size  
(Refer to the table.)

Design No.  
(Revision Number)



(mm)

Model No.	TLZ0400-L2	TLZ0600-L2	TLZ0800-L2	TLZ1000-L2	TLZ1600-L2	TLZ2000-L2	TLZ2500-L2	TLZ4000-L2
Corresponding Model No.	TLA0402-1	TLA0602-1	TLA0802-1	TLA1002-1	TLA1602-1	TLA2002-1	TLA2502-1	TLA4002-1
A	19	22	25	30	34	40	46	55
B	22	25	26	32	36	45	53	70
C	9.5	11	12.5	15	17	20	23	27.5
D	14 <sup>0</sup> <sub>-0.016</sub>	16 <sup>0</sup> <sub>-0.016</sub>	18 <sup>0</sup> <sub>-0.016</sub>	22 <sup>0</sup> <sub>-0.020</sub>	25 <sup>0</sup> <sub>-0.020</sub>	30 <sup>0</sup> <sub>-0.020</sub>	35.5 <sup>0</sup> <sub>-0.025</sub>	45 <sup>0</sup> <sub>-0.025</sub>
E	15	18	19	23	26.5	31.5	36.5	46
F	9.25	11	12	14.75	17	20	23.5	29.75
G	11	14	14	17.5	20	23	26	32
H	5.5	7	7	8.75	10	11.5	13	16
J	6.5	8.5	8.5	10.5	12.5	14.5	16.5	21
K	2	3	3	4	4	5	7	9
L	13.5	15.5	16	18	22	26.5	31	42
M	M6×1	M8×1	M8×1	M10×1.25	M12×1.5	M14×1.5	M16×1.5	M20×2
N	C0.4	C0.6	C0.6	C0.6	C1	C1	C1	C1
P	2	2	2	2	2	2	2	2
Z	105	120	145	160	170	175	185	220

Notes :

1. Material : S50CH
2. If necessary, the front end should be additionally machined.
3. If lever phasing is required, refer to "Pin Hole for Lever Phasing Additional Machining Dimensions" for additional machining.
4. Lever tightening bolt is sold separately.

Accessories : Tightening Bolts for Quick Change Lever

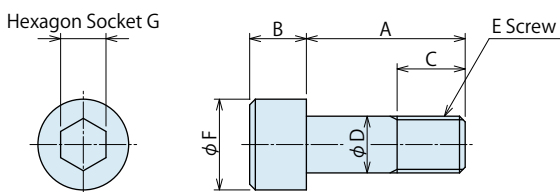
※ When designing the lever tightening bolt, follow the dimensions shown below. Strength Grade should be 12.9 or more.

Model No. Indication

**TLZ 080 0 - LB**

Size  
(Refer to the table.)

Design No.  
(Revision Number)



(mm)

Model No.	TLZ0400-LB	TLZ0600-LB	TLZ0800-LB	TLZ1000-LB	TLZ1600-LB	TLZ2000-LB	TLZ2500-LB	TLZ4000-LB
Corresponding Model No.	TLA0402-1	TLA0602-1	TLA0802-1	TLA1002-1	TLA1602-1	TLA2002-1	TLA2502-1	TLA4002-1
A	20	22	23	28	32	40	46	61
B	6	8	8	10	12	14	16	20
C	7	9	10	11	13	16	18	23
D	6	8	8	10	12	14	16	20
E	M6×1	M8×1	M8×1	M10×1.25	M12×1.5	M14×1.5	M16×1.5	M20×2
F	10	13	13	16	18	21	24	30
G	5	6	6	8	10	12	14	17